

StormSafe® Fabric Mesh Panels

- Lightweight temporary storm protection
- Mesh fabric eliminates black-out effect caused by plywood
- Unique zipper option for easy escape



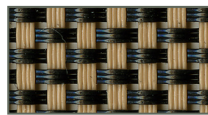
- Customized shapes and sizes to attractively fit your home's openings
- Provides wind protection to prevent roof lift off
- Protects home from flying storm debris
- Simple wing-nut fasteners
- Single person application for all but the largest sizes
- You can store every mesh for your house in the hall closet
- Professional StormSafe® installation of all permanent mounting fasteners

Standard Colors

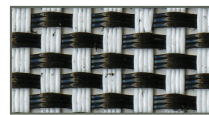
Black



Tan/Black

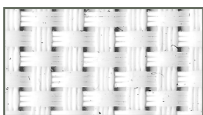


Black/White

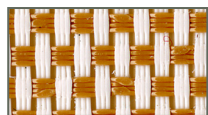


Upgrade Colors

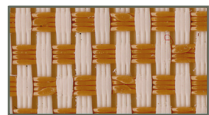
White/White



Tan/White



Tan/Tan



Fabric Strap and Buckle

- Prevents broken windows
- Ideal for large openings where HVHZ protection is a must
- Sloped fabric temporarily attaches to permanently installed wall and ground anchors
- Ground anchors slope fabric away from glass, enabling the fabric to absorb flying debris and preventing glass breakage



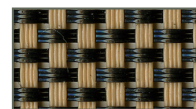
- Ground and wall anchors are permanently applied and ready when applying fabric strap and buckle storm protection.
- Concrete anchors installed on patios and driveways with cover screws to keep out debris.
- Attach eyebolts to anchors when ready to apply StormSafe® fabric strap and buckle protection.

Colors Available

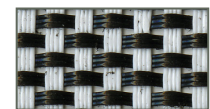
Black



Tan/Black



Black/White



Florida Building Code (FBC) approved
Texas Department of Insurance (TDI) approved

Florida Building Code (FBC) compliant
Texas Department of Insurance (TDI) approved
Miami-Dade HVHZ compliant (strap and buckle only)

StormSafe® Fabric Roll Mesh

- Repels wind and debris



- Provides peace of mind during storms
- Always in place and ready to use
- Widths up to 17' wide
- Blocks 95% of all wind, rain and debris while still allowing in natural light



- Provides visibility from the inside when mesh is in use
- Lets in light while storm protection is deployed

Florida Building Code (FBC) compliant
Texas Department of Insurance (TDI) approved

Copyright©2010 QMI Security Solutions, Inc. Roll-a-way™ is a trademark of QMI. Storm-Safe® is a registered brand of QMI. Not to be duplicated, altered or reproduced. To meet building codes listed, specific mounting provisions will be required.

SSFAB 10 V2-1000

Operation Options



Manual Crank Operator



Motorized with switch or remote control



Manual override available



- Operates from interior or exterior of home
- Low profile design

Box and Track Color Selection

White



Cream



Beige

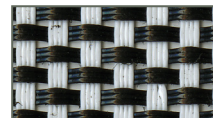


Fabric Color Selection

Black



White/Black



Consult actual mfr. product samples for exact color representation.