

STACKABLE GRILLES

security

WITH INNOVATION

14' tall – 6" Deep Stacking Space



Minimum Installation Space

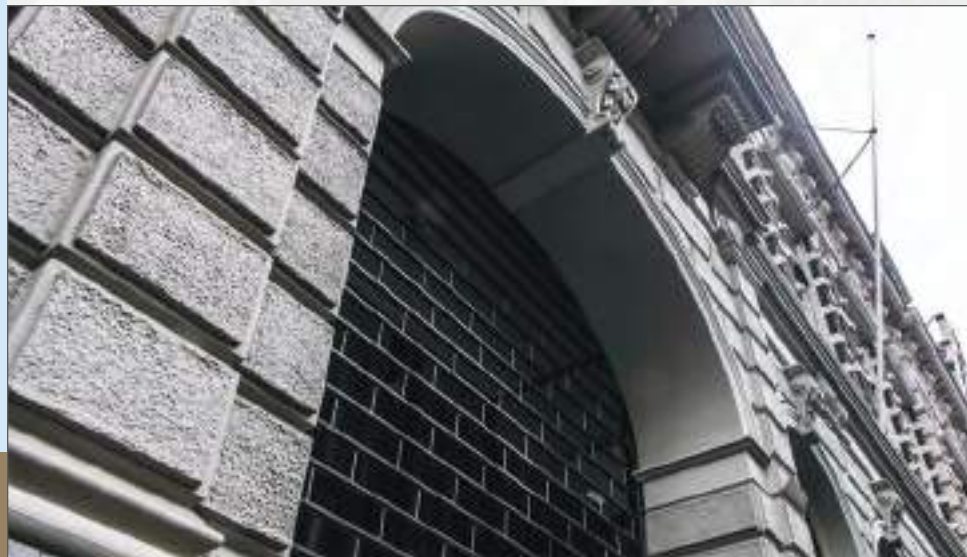
Rolling security grilles typically require 18-20" of square headbox space for the top drive tube and the coiling grille curtain. Stackdoor's innovation enables the ½" horizontal bars to stack on top of each other, rather than rolling around a drive tube. A head depth of only **SIX INCHES** is needed for a Stackdoor up to 14' tall. The drive motor engages a chain in the 4.75" wide by 2.75" deep side tracks to raise and lower the security grilles. The vertical alternating stainless-steel pins disappear into the actual stack of the horizontal bars and bottom slat as they stack during upward movement. Mounting is required only at the side tracks; thus, no special headers or hanger structure is needed.

Optimal Transparency

The stainless-steel horizontal bars are only ½" tall, with 4.65" space in between—providing a **91% visibility factor through the grille**. Stackdoor's design easily meets the mandated visibility requirements for New York City and San Francisco. As anti-graffiti regulations expand to other locales, Stackdoor grilles will remain compliant. Law enforcement desires an open grille system as well, so when responding to an alarm, they have complete visibility prior to entering the store.



STACKDOOR
By  **QMI**



Security Grilles



Motors and Automation

Available options include:

- Single switch control
- Group control switch using relays
- Remote control operation for single or grouped Stackdoors
- Keypad/key-switch operation
- Somfy motor's myLink WIFI interface control for tablet or smart phone APP control
 - Scheduled operations
 - Scene creations
 - Group controls
 - myLink provides JSON protocols to interface third party control systems
- Optional: manual hand crank override (*not for egress applications*)
- 5-year motor warranty*

**parts only for 5 years. \$25 handling fee applies. Labor cost or motor access labor not included. Warranty does not restart.*



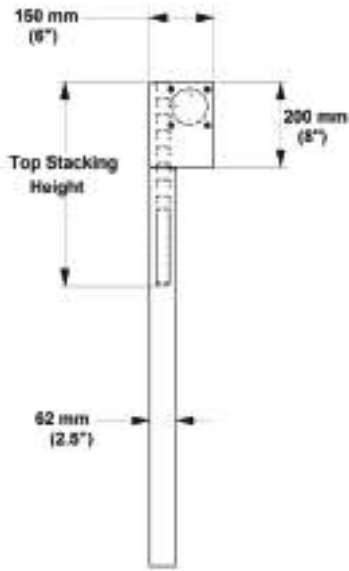
PROTECTION **with** VISION

Flexible Design Options

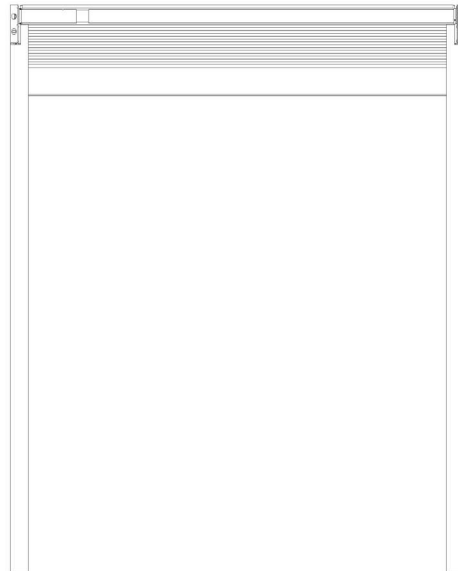
- Width: up to 19'-6"
- Height: up to 16'
- Optional: Stackdoor-Up, motor-up operation to secure opening. Open gate stack then is parked at the bottom knee wall or recessed into the floor
- Depth: thin profile, 6" deep cavity for top or bottom stack-no structural support needed for top stack
- Drive chain control provides locking mechanism-no separate locks required
- Recessed installation or exposed face mount with optional top stack cover
- Two-piece side track for face or jamb mount applications
- Standard stainless-steel bars and pins with optional custom (RAL colors) powder coat paint

Clear Opening Height	Top Stacking Height	Total Unit Height
64 3/8	14 3/8	up to 78 3/4
71 1/4	15 3/8	up to 86 5/8
78 1/4	16 5/8	up to 94 1/2
85 1/4	17 1/8	up to 102 3/8
92 1/8	18 1/8	up to 110 1/4
99 1/8	19	up to 118 1/8
106	20	up to 126
113	20 7/8	up to 133 7/8
119 7/8	21 3/4	up to 141 3/4
126 7/8	22 3/4	up to 149 5/8
133 3/4	23 3/4	up to 157 1/2
140 3/4	24 5/8	up to 165 3/8
147 5/8	25 1/2	up to 173 1/4
154 5/8	26 1/2	up to 181 1/8
161 1/2	27 1/2	up to 189
168 1/2	28 3/8	up to 196 7/8

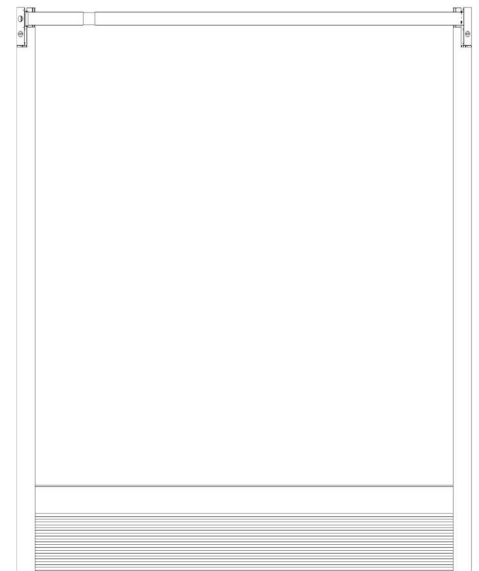
All dimensions shown in inches. For stacking heights, always round up to the next largest cell-do not "average".



**Section View
Std. Stackdoor**



**Standard
Stackdoor**



**Stackdoor
Up**



PROTECTION **with** VISION



STACKDOOR
By  **QMI**

QMI Security Solutions

1661 GLENLAKE AVE • ITASCA, IL. 60143
(800) 446-2500 • International: 00 1 630 529 7111

www.qmiusa.com